



**THE KATHERINE 212D**

Build on Your Land or Ours

**HOUSE ONLY PACKAGE**

FROM **\$345,000**

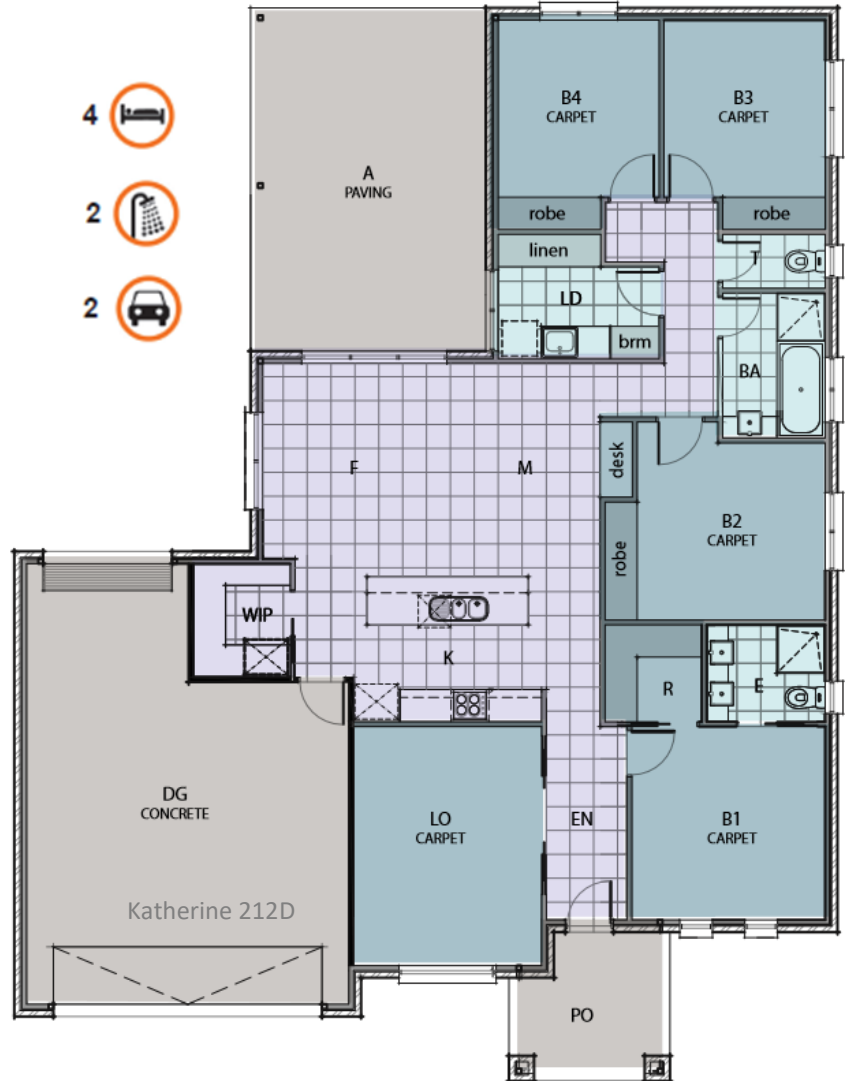
House Size: 26sqm

*SILVER INCLUSIONS*

- 4 Bedrooms
- 2 Bathrooms
- Walk in pantry
- Dishwasher
- Carpet & Tiles Throughout
- Spacious living & Dining Area
- Alfresco
- Concrete to entire perimeter
- Concrete Driveway (35m<sup>2</sup>)
- Reverse Cycle



*A FAMILY FAVOURITE*



- 4
- 2
- 2

\*Prices may change without notice.