

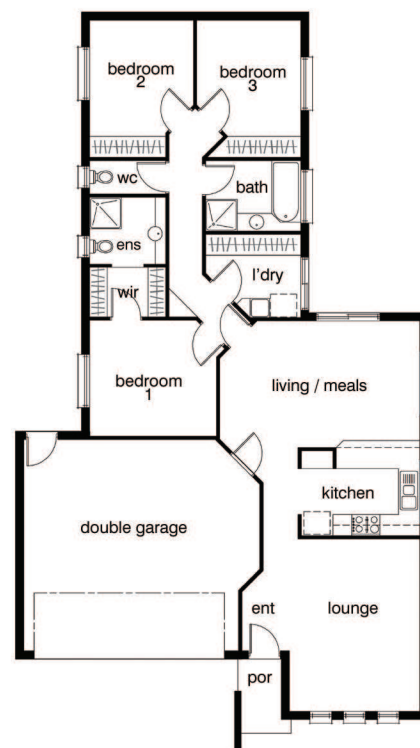
the melbourne



A fashionable facade gives the Melbourne instant street appeal.

Designed with First Home buyers and investors in mind, yet offering a trendy and simplistic living style at a very affordable price. Its flowing living areas are focused on a central kitchen and various bedroom/bathroom options.

- 3 bedrooms with robes
- open space meals/living area
- double garage
- formal lounge



174

- dwelling:	128.5m ²
- garage:	42.5m ²
- porch:	2.7m ²
- total:	173.7m²



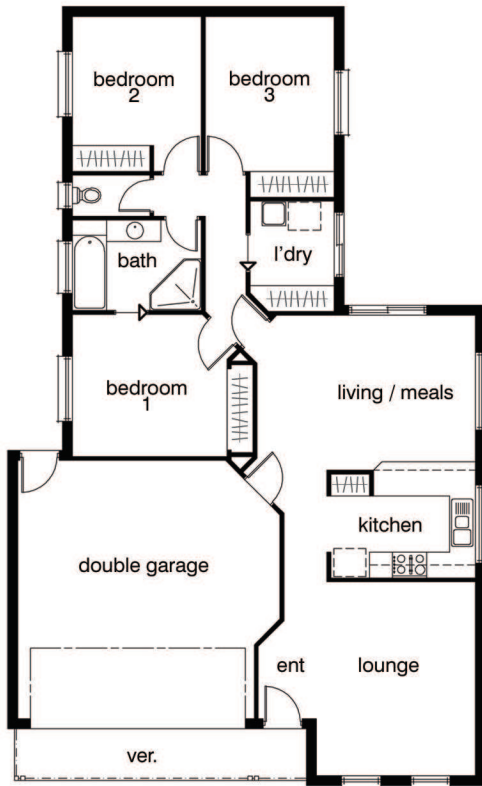
MQH
DEVELOPMENTS

MQH Developments

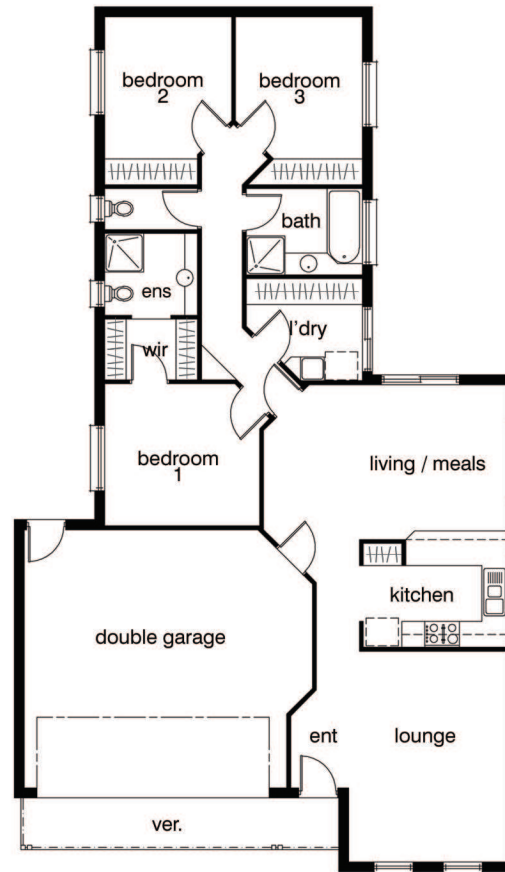
60 Madden Avenue, Mildura VIC 3500
Phone: (03) 5021 0666
Email: mqhdev@bigpond.net.au
www.mqh.com.au

IRE BOUNDARY
S MAINTAIN 606060
BCA REGULA

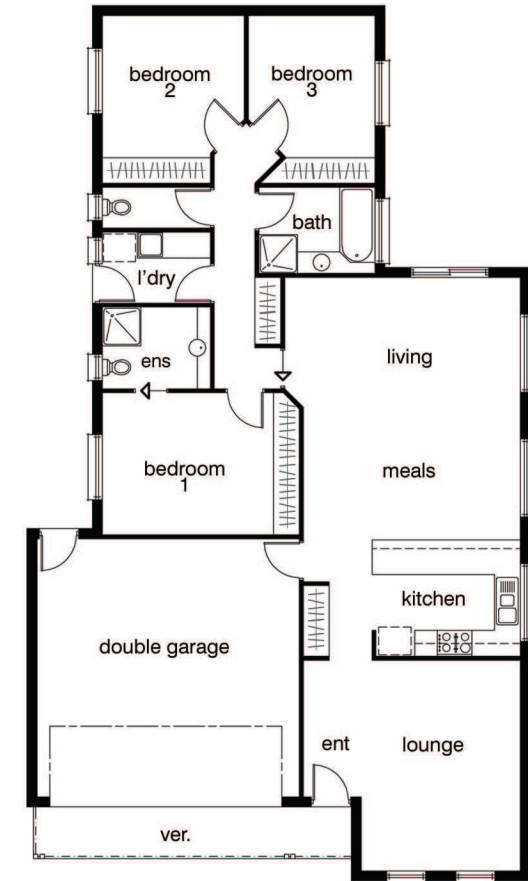
the melbourne



164	- dwelling:	117.4m ²
	- garage:	38.6m ²
	- verandah:	8.1m ²
	- total:	164.1m²



180	- dwelling:	128.5m ²
	- garage:	42.5m ²
	- verandah:	8.8m ²
	- total:	179.8m²



195	- dwelling:	145.1m ²
	- garage:	40.9m ²
	- verandah:	8.8m ²
	- total:	194.8m²

Please Note: Plans and elevations may change at anytime without notice. All images, illustrations and plans as part of this document, remain the property of MQH Developments at all times and may not be used or reproduced, in part or full, without express written consent from MQH Developments.

