



Take a Virtual Tour  
[www.lockstar.com.au](http://www.lockstar.com.au)

**HENRYS RUN**

**Lot 28 Matilda Place**

**HOUSE & LAND PACKAGE**

**THE CHAMELEON**

FROM **\$981,000**



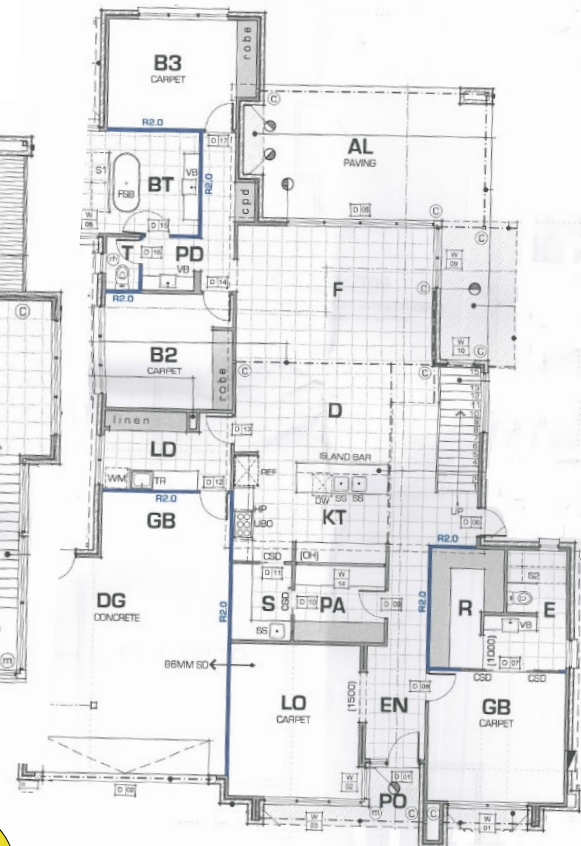
**HENRYS RUN ESTATE**  
HALF ACRES IN THE CITY

Land Size: 2008m2 House Size: 46sqm

**EXCEPTIONAL 2 STOREY HOME**

*SILVER INCLUSIONS*

- 4 Bedrooms
- Luxurious Master Suite
- 3 Bathrooms
- Double Auto Garage & Extra Storage
- Alfresco Area
- Balcony with decking
- Large Open Living Spaces
- Heating/Cooling
- Carpet & Tiles Throughout
- Large Walk in Pantry
- Wine Room Cellar



**House \$661,000**  
**Land \$320,000**



\*Prices may change without notice.