

PHOTO FOR ILLUSTRATIVE PURPOSES ONLY

Take a Virtual Tour

www.lockstar.com.au

HENRYS RUN

Lot 28 Matilda Place

HOUSE & LAND PACKAGE

FROM **\$1,143,000**



HENRYS RUN ES
HALF ACRES IN THE

Land Size: 2003m² House Size: 46sqm

SILVER INCLUSIONS

- 4 Bedrooms
- Luxurious Master Suite
- 3 Bathrooms
- 20 Downlights
- Double Auto Garage & Extra Storage
- Alfresco Area
- Balcony with decking
- Large Open Living Spaces
- Heating/Cooling
- Carpet & Tiles Throughout
- Large Walk in Pantry
- Wine Room Cellar

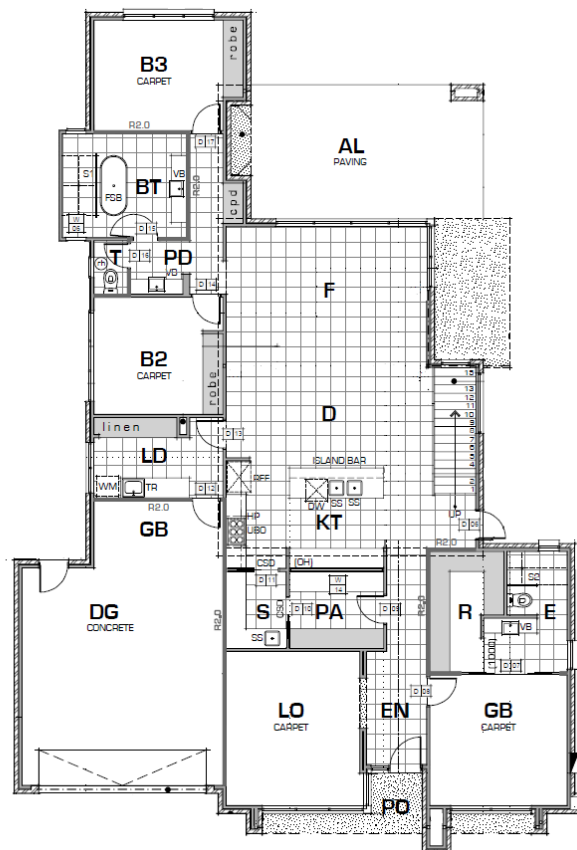
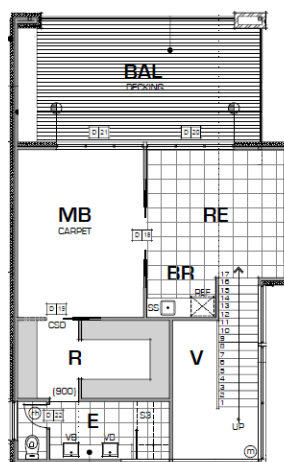


House \$778,000

Land \$365,000

THE CHAMELEON

EXCEPTIONAL 2 STOREY HOME



*Prices may change without notice.