

PHOTO FOR ILLUSTRATION PURPOSE ONLY

Take a Virtual Tour
www.lockstar.com.au

HENRYS RUN

Lot 29 Matilda Place

HOUSE & LAND PACKAGE

FROM **\$1,208,000**



HENRYS RUN ESTATE
HALF ACRES IN THE CITY

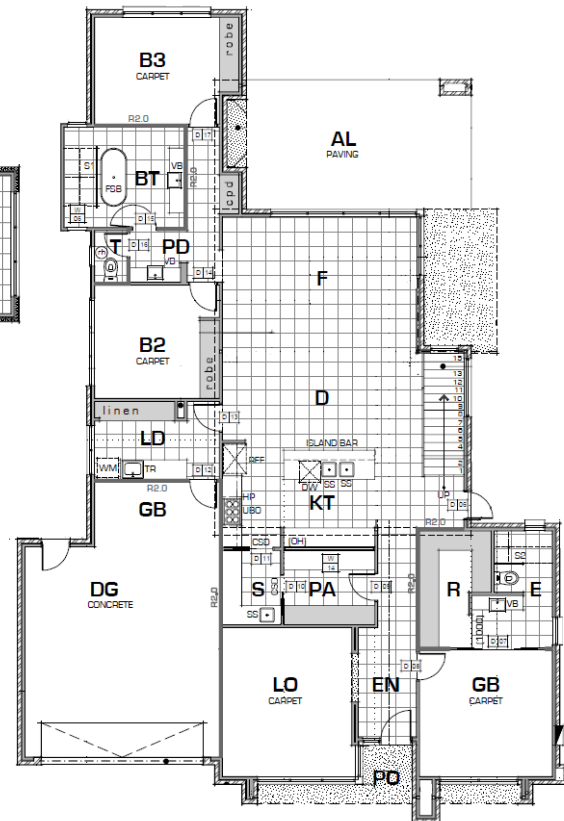
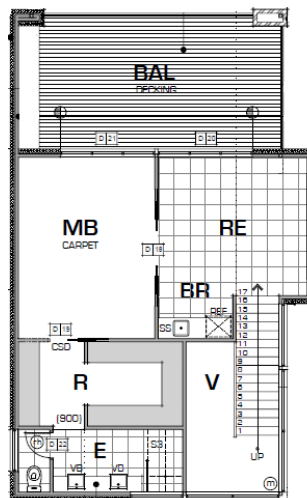
THE CHAMELEON

EXCEPTIONAL 2 STOREY HOME

Land Size: 2013m2 House Size: 46sqm

GOLD INCLUSIONS

- 4 Bedrooms
- 9' Ceilings ground floor & 8'6" top floor
- Luxurious Master Suite
- 3 Bathrooms
- 30 Downlights
- Split Level
- Double Auto Garage & Extra Storage
- Pebble Crete to perimeter & Alfresco Area
- Balcony with decking
- Large Open Living Spaces
- Reverse Cycle
- Large Walk in Pantry
- Wine Room Cellar



House \$843,000

Land \$365,000



*Prices may change without notice.