



Photo for illustrative purposes only

★★★★★★  
7 Star Energy Rating

**TURNKEY READY**

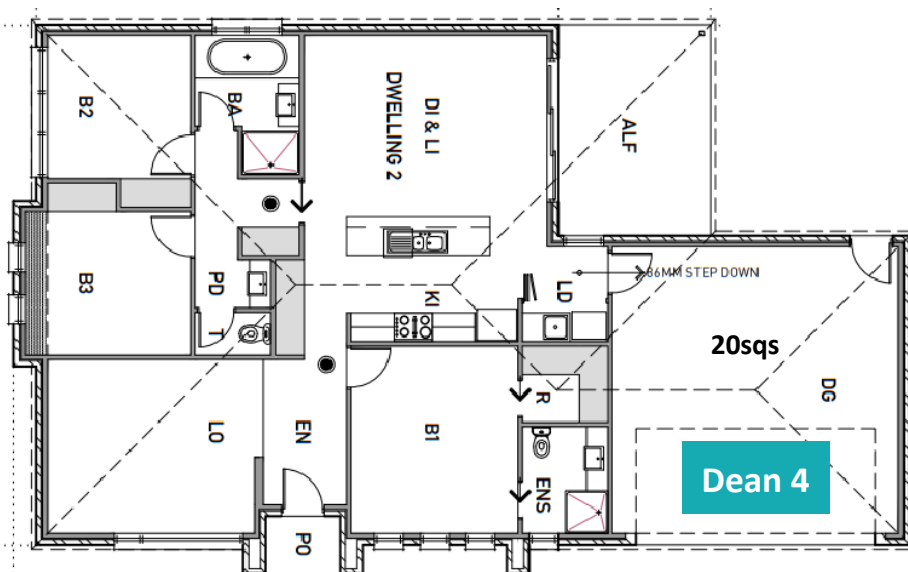
**H&L from: \$584,000**

**Lot 2/36 Elphicks Way** Land Size: 353m<sup>2</sup>



## Turnkey Package Inclusions

- Fixed Site Costs
- 2550mm High Ceilings
- Reverse Cycle Heating and Cooling
- Feature Entrance Door with Trilock
- Flooring Throughout
- Stone Benchtops to Kitchen
- Stainless Steel Kitchen Appliances
- Cold Water to Fridge Space
- Niches in Bathrooms
- Blinds and Flyscreens
- LED Lighting Package Including Ceiling Fans
- Paths, Driveway and Crossover
- Landscaped and Fully Fenced Including Gates
- Feature Façade Lights
- TV Antenna, Letterbox, Clothesline



\*Prices may change without notice.

**Address: 75 Melaleuca Street Buronga Phone: 0418 552 305 Email: janet@lockstar.com.au**