



Photo for illustrative purposes only

## THE KATHERINE 212D

Build on Your Land or Ours

### HOUSE ONLY PACKAGE

FROM **\$432,000**

House Size: 26sqm

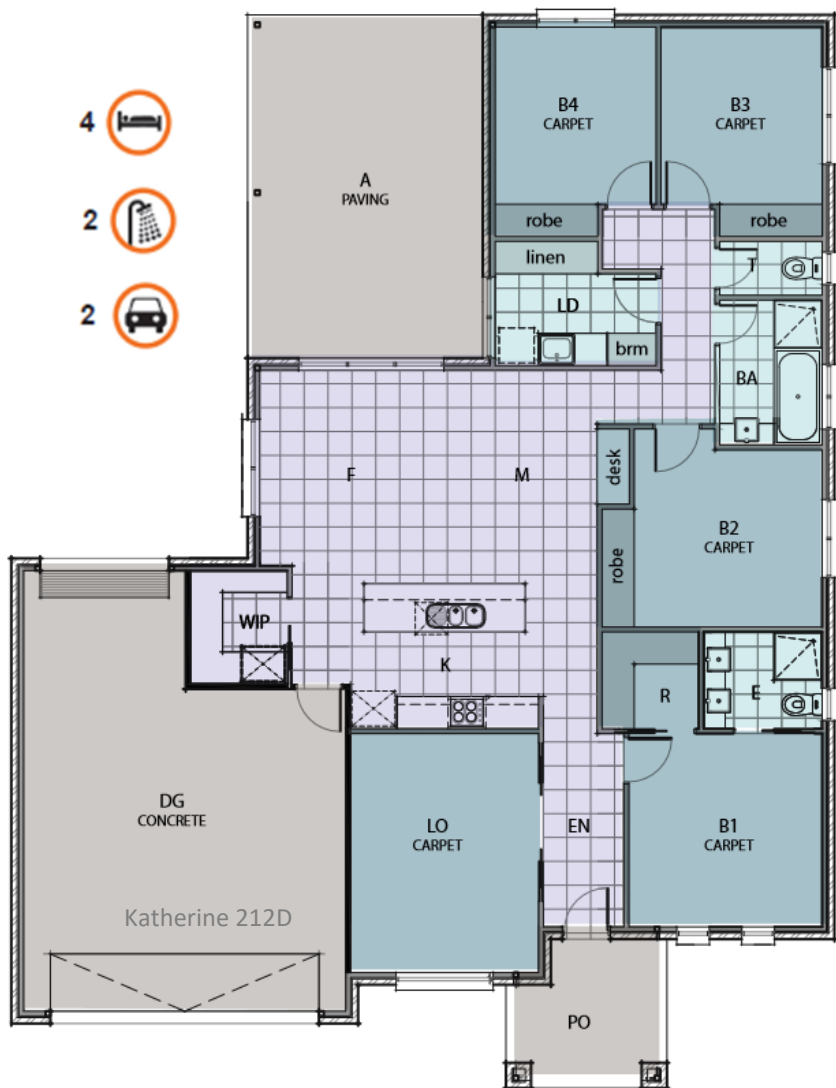
### SILVER INCLUSIONS

- 4 Bedrooms
- 2 Bathrooms
- Walk in pantry
- Dishwasher
- Carpet & Tiles Throughout
- Spacious living & Dining Area
- Alfresco
- Concrete to entire perimeter
- Concrete Driveway (35m<sup>2</sup>)
- Reverse Cycle

★★★★★★  
7 Star Energy Rating



A FAMILY FAVOURITE



- 4
- 2
- 2

\*Prices may change without notice.