



★★★★★★  
7 Star Energy Rating

Take a Virtual Tour  
[www.lockstar.com.au](http://www.lockstar.com.au)

PHOTO FOR ILLUSTRATIVE PURPOSES ONLY

## HENRYS RUN Lot 28 Matilda Place

### HOUSE & LAND PACKAGE

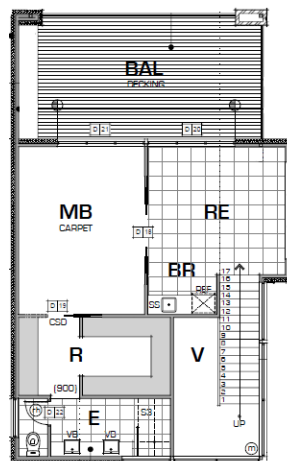
FROM **\$1,179,000**



Land Size: 2003m2 House Size: 46sqm

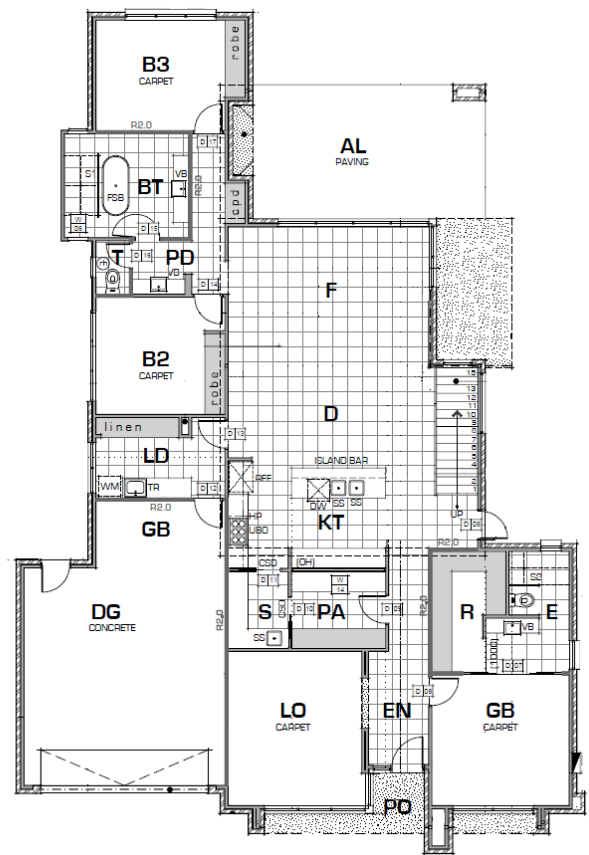
#### SILVER INCLUSIONS

- 4 Bedrooms
- Luxurious Master Suite
- 3 Bathrooms
- 20 Downlights
- Double Auto Garage & Extra Storage
- Alfresco Area
- Balcony with decking
- Large Open Living Spaces
- Heating/Cooling
- Carpet & Tiles Throughout
- Large Walk in Pantry
- Wine Room Cellar



### THE CHAMELEON

EXCEPTIONAL 2 STOREY HOME



House \$814,000  
Land \$365,000



\*Prices may change without notice.