



★★★★★★  
7 Star Energy Rating

Take a Virtual Tour  
[www.lockstar.com.au](http://www.lockstar.com.au)

PHOTO FOR ILLUSTRATION PURPOSE ONLY

**HENRYS RUN** **Lot 29 Matilda Place**

**HOUSE & LAND PACKAGE**

FROM **\$1,291,000**



**HENRYS RUN ESTATE**  
HALF ACRES IN THE CITY

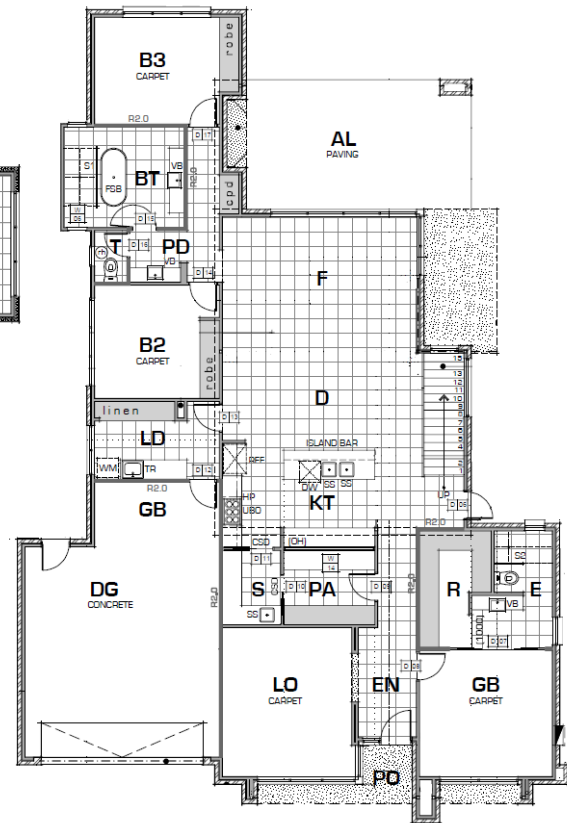
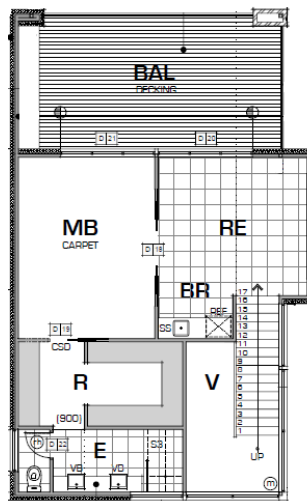
**THE CHAMELEON**

EXCEPTIONAL 2 STOREY HOME

Land Size: 2013m2 House Size: 46sqm

**GOLD INCLUSIONS**

- 4 Bedrooms
- 9' Ceilings ground floor & 8'6" top floor
- Luxurious Master Suite
- 3 Bathrooms
- 30 Downlights
- Split Level
- Double Auto Garage & Extra Storage
- Pebble Crete to perimeter & Alfresco Area
- Balcony with decking
- Large Open Living Spaces
- Reverse Cycle
- Large Walk in Pantry
- Wine Room Cellar



**House \$926,000**  
**Land \$365,000**



\*Prices may change without notice.